

I-680/SR4 Interchange Improvements - Phase 3

Ivan Ramirez

Director of Construction

Contra Costa Transportation Authority

December 15, 2021



CONTRA COSTA
**transportation
authority**

Project Details

- Notice-to-Proceed: November 14, 2018
- 123 Non-Working Days have been issued
- Several issues have been encountered since the project began

Resolution 18-59-P	
Bid Items	\$86,305,703
Supplemental Funds	\$1,837,000
State Furnished Materials	\$677,500
Contingency	\$8,882,020
Total	\$97,702,223



HWY 4 – East End



Peralta Road



- New Lane
- Added Bioswales
- Improved Shoulders

Solano Way



- New Lane
- Added Bioswales
- Widened Shoulders

Walnut Creek Bridge

I-680/SR 4 Interchange Improvements - Phase 3



I-680/HWY 4 Interchange



Pacheco Blvd.



CCO #26: Differing Site Conditions (\$1,054k)

- The Contractor encountered differing site conditions the length of the project.

Project Length - Approximately 18,000 ft



CCO Various: Misc. Electrical Issues (\$675k)

- Numerous CCOs were written to resolve various conflicts encountered.

Project Length - Approximately 18,000 ft



680

CCO Various: Vandalism (\$338k)

- Vandalism of public facilities has had an impact on the project budget.

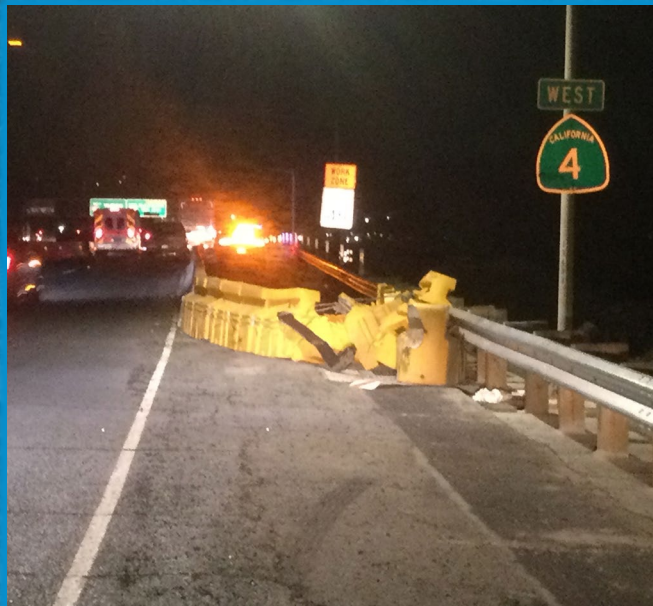
Project Length - Approximately 18,000 ft



CCO Various: Maintenance/Crash Cushions(\$649k)

- During construction the Authority is responsible for maintaining the freeway within the project limits.

Project Length - Approximately 18,000 ft



CCO #45: Buried Manmade Objects (\$585k)

- The Contractor encountered buried manmade objects the length of the project.

Project Length - Approximately 18,000 ft



Rancho Diablo
Mobile Home Park

CCO #74: Terminal Joints (\$870k)

- The contract documents do not identify the locations, details or types of transitions for differing materials including:
 - Continuously Reinforced Concrete Pavement (CRCP) to Rubberized Hot Mix Asphalt (RHMA)
 - CRCP to Joint Plain Concrete Pavement (JPCP)
 - Approach Slab to JPCP
 - JPCP to RHMA



CCO #78: Sawcut and Replace PCC Edge(\$571k)

- After saw cutting operations began, the Contractor discovered that the existing concrete pavement edge was rolled instead of flat
- The edge of the concrete pavement was spalling
- The edge of the existing concrete pavement needs to be flat to allow for proper installation of the isolation joint



4

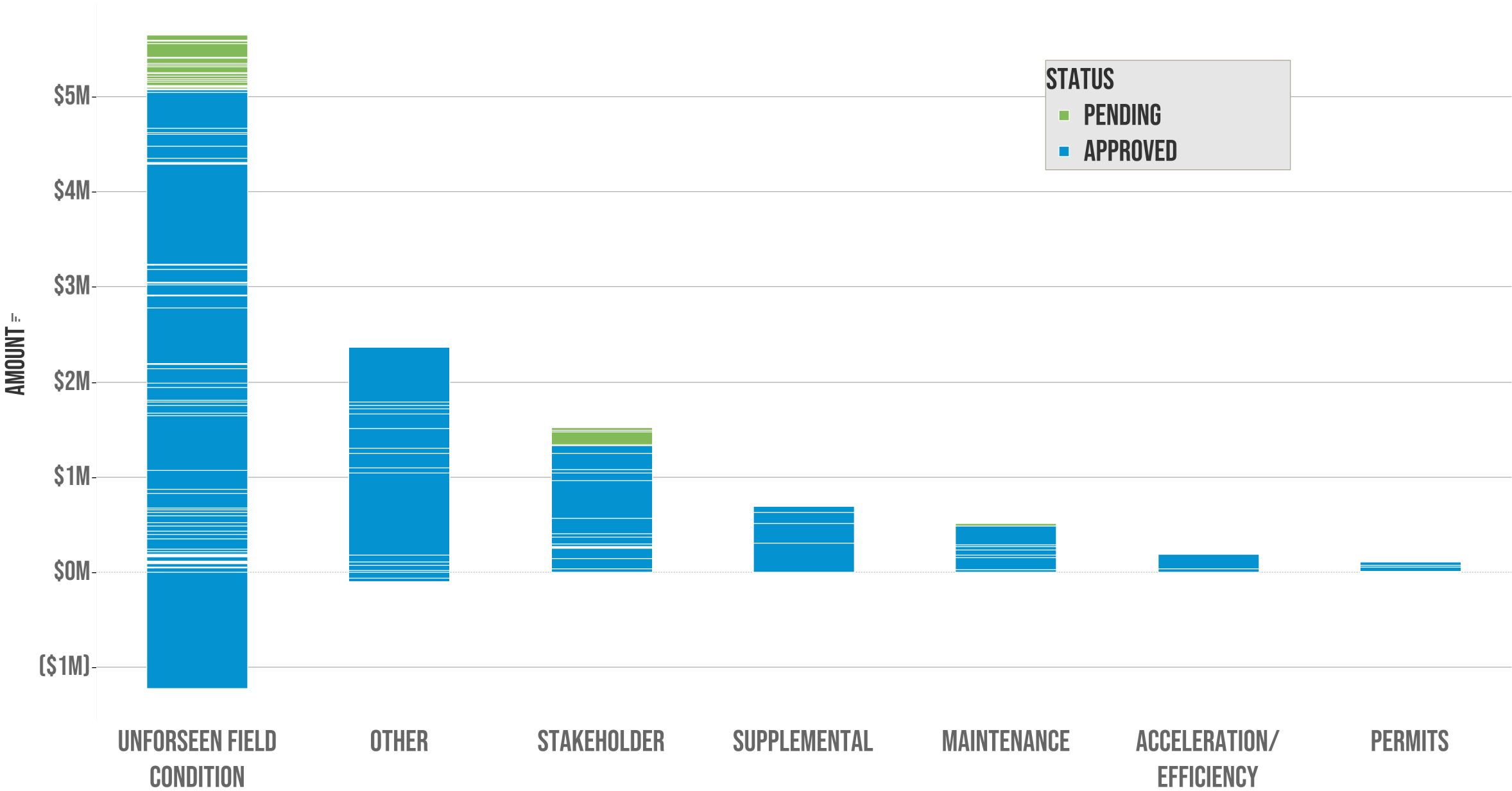
4

CCO #79: Grayson Creek Approach Slabs (\$190k)

- Due to the skew of the bridge (41 degrees), the approach slab requires a stagger.
- No staggers were shown in the contract documents.



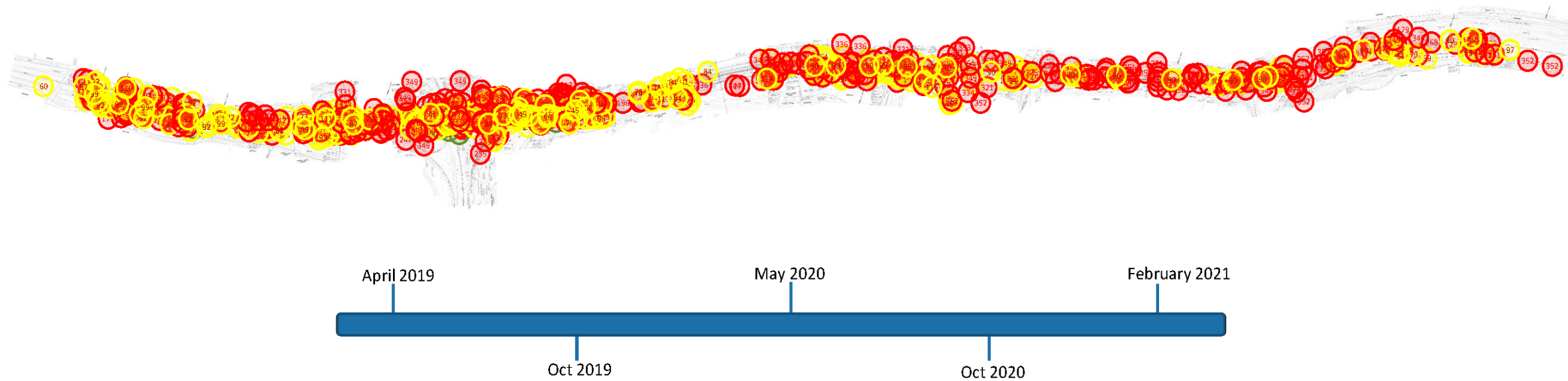
CATEGORY



- RFI
- Letters
- Change Orders

Job 16 Hwy 680 & 4 Interchange Impact Map

All impacts to February 2021



Questions



CONTRA COSTA
**transportation
authority**

Project Budget Status

- Below is an estimate of the current budget which includes estimated CCOs not yet approved if Resolution 18-59-P (rev 1) is approved.

Resolution 18-59-P (rev 1)		Status 11/30/2021	
Bid Items	\$86,305,703	\$87,660,111	102%
Supplemental Funds	\$1,837,000	\$888,000	48%
State Furnished Materials	\$677,500	\$473,775	70%
Contingency	\$10,955,020	\$10,717,925	98%
Total	\$99,775,223	\$99,739,811	99%

Staff Seeks Approval

- Staff seeks approval of Resolution 18-59-P (Rev 1), which will increase the authorized construction allotment by \$2,073,000 for a new total construction allotment value of \$99,775,223.
- Staff seeks approval of Resolution 21-47-P, which adopt Amendment No. 2 to the 2019 Measure J Strategic Plan.

Questions



CONTRA COSTA
**transportation
authority**